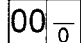


# SERVICE PARTS LIST

**BULLETIN NO.**  
54-02-0125

SPECIFY CATALOG NO. AND SERIAL NO. WHEN ORDERING PARTS		REVISED BULLETIN	DATE
3/4 TON LEVER HOIST			June '98
CATALOG NO. 9533, 9534, 9535	DATE CODE VG 9408	WIRING INSTRUCTION <b>NONE</b>	

**EXAMPLE:**  

 Component Parts (Small #)  
 Are Included When Ordering  
 The Assembly (Large #).

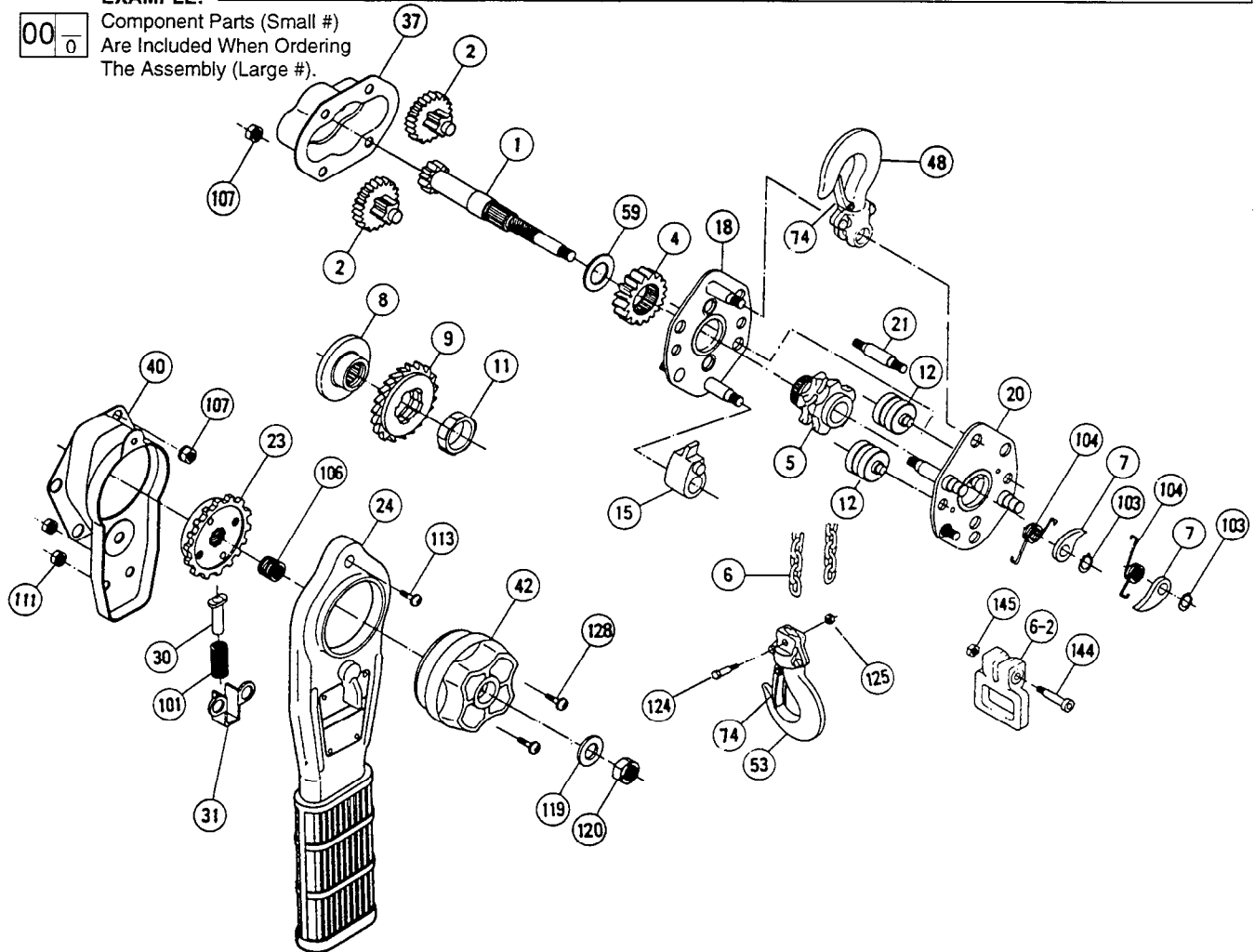


FIG.	PART NO.	DESCRIPTION OF PART	NO. REQ.
1	36-66-0010	Pinion Shaft	(1)
2	32-60-0010	Pinion with Pinion Gear	(2)
4	32-60-0020	Load Gear	(1)
5	45-11-0180	Load Sheave	(1)
6.2	45-52-0020	Stop Grip	(1)
7	44-55-0010	Pawl	(2)
8	43-78-0020	Disc Hub	(1)
9	45-94-0010	Ratchet Wheel	(1)
11	44-90-0300	Interlocking Ring	(1)
12	43-56-0500	Chain Guide	(2)
15	44-77-0010	Stripper	(1)
18	44-66-0020	Gear-Side Plate	(1)
20	44-66-0030	Handle-Side Plate	(1)
21	42-32-0010	Stay Bolt	(1)
23	44-40-0020	Disc Nut	(1)
24	43-62-0030	Operating Handle	(1)
30	45-08-0010	Spring Shaft	(1)
31	42-20-0010	Shaft Base	(1)
37	42-92-0980	Gear Cover	(1)
40	42-92-0990	Ratchet Cover	(1)
42	43-62-0040	Guide Handle	(1)
48	43-74-0020	Top Hook Assembly	(1)
53	43-74-0030	Bottom Hook Assembly	(1)
59	45-88-8610	Pinion Shaft Washer	(1)
74	44-20-0370	Safety Latch Assembly	(2)
101	40-50-8810	Change-Over Spring	(1)
103	44-90-0310	Snap Ring	(2)
104	40-50-8820	Pawl Spring	(2)

FIG.	PART NO.	DESCRIPTION OF PART	NO. REQ.
106	40-50-8830	Free-Wheeling Spring	(1)
107	44-40-0030	Spring Nut	(8)
111	44-40-0040	Spring Nut	(2)
113	45-88-8620	Screw & Spring Washer	(1)
119	45-88-8630	Flat Washer	(1)
120	44-40-0045	Lock Nut	(1)
124	42-32-0090	Chain Fastening Bolt	(1)
125	44-40-0055	Lock Nut	(1)
128	45-88-8640	Screw & Spring Washer	(2)
144	42-32-0030	Socket Bolt	(1)
145	44-40-0065	Lock Nut	(1)

FIG.	PART NO.	DESCRIPTION OF PART	NO. REQ.
(For Catalog 9533 Only)			
	12-40-0081	Nameplate	(1)
6	42-60-0030	3/4 Ton 5 Ft. Load Chain	(1)
(For Catalog 9534 Only)			
	12-40-0086	Nameplate	(1)
6	42-60-0035	3/4 Ton 10 Ft. Load Chain	(1)
(For Catalog 9535 Only)			
	12-40-0091	Nameplate	(1)
6	42-60-0040	3/4 Ton 20 Ft. Load Chain	(1)

**MILWAUKEE ELECTRIC TOOL CORPORATION**  
 13135 W. Lisbon Road, Brookfield, WI 53005  
 Drwg. 1